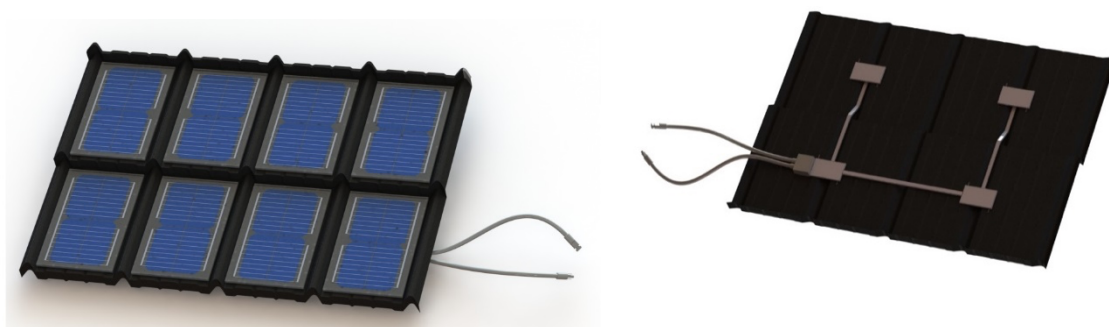


Photovoltaic Roof Module - SolarTile 40 pv 8 double



Mechanical data

Dimensions (mm)	1191x820
Weight (kg)	9.3
Cable	1000mm in length, 4mm ²
Glass	High Transmittance, Tempered Glass 4mm
Junction box	IP68, 1 Bypass-Diode,
Connector	Compatible with MC 4 plug

Working conditions

Max system voltage	1000V
Series fuse rating	10A
Mechanical load	5400Pa
Operating temperature	-40 +85°C
Application class	A

Type (STC)

Power output (Wp)	72
Max. power tolerance (%)	+ 5
Module efficiency (%)	22,1
Max. voltage, Vmppt (V)	17,28
Current, Imppt (A)	4,10
Voltage open circuit, Voc (V)	21,25
Short circuit current, Isc (A)	4,35

Solar Cell:

Solar cel type	Mono-crystalline
Solas cell size (mm)	83mm x 166mm (9 BB) halfcut
Power output	6.06
Module efficiency (%)	22.1
Max. voltage, Vmpp (V)	0.579
Current, Impp (A)	10.47
Voltage open circuit, Voc (V)	0,668
Short circuit current, Isc (A)	11.03

Micro panel:

Dimensions (mm)	228 x 366
Number of solar cels	32x (83mm x 166mm)

Tested according to standards:

Terrestrial photovoltaic (PV) modules – Design qualification and type approval	IEC 61215-1-1:2021 Special requirements for testing of crystalline silicon Photovoltaic (PV) modules IEC 61215-2:2021 Test procedures
Photovoltaic (PV) module safety qualification	IEC 61730-1:2016 Requirements for construction EN IEC 61730-1:2018 Requirements for construction
Resistance of roofs to external fire	PKN-CEN/TS Method 1 1187:2014-03

TÜV pending



vallosolar.com